

More Trains – More Services

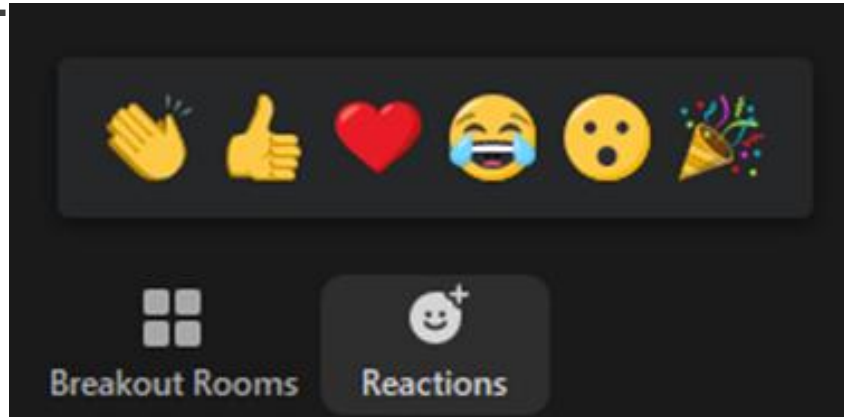
Stage 2

Supplier Engagement Forum



acknowledgement,
inclusion & respect

- Recording
- Video - off unless presenting
- Audio - mute unless presenting
- Chat – questions visible to everyone
- Behave reasonably...
- And have fun



Agenda

Item	Topic	Speaker/s
1	Welcome	Hayley Jarick - CEO, Supply Chain Sustainability School
2	Project overviews	James Griffin – Project Director, TfNSW Paul Dudding – General Manager, Next Rail (North Package) David Robotham – General Manager, Transport for Tomorrow (TFT) (South Package)
3	MTMS Program Sustainability Expectations	Ingrid Segovia & Tim Clarke – TfNSW Matt Dimarco – Next Rail Lindsey Spiller – TFT
4	Social Procurement & Workforce Development	Basilía McGaw – TFT Madison Page – Next Rail Alex Bonello – Next Rail Mariana Allen – Next Rail
5	Supply Nation	Ben Price – Supply Nation
6	Procurement Expectations Tender Process Supplier Evaluation Process	Tom Cho – Next Rail Richard Bentley – TFT
7	About the Supply Chain Sustainability School & how the online resources can benefit your organisation. Landing Page Introduction and EOI	Hayley Jarick - CEO, Supply Chain Sustainability School
8	Question Time	
9	Wrap Up	Hayley Jarick - CEO, Supply Chain Sustainability School

MTMS Stage 2 Program Overview

MEDIUM TERM RAIL DEVELOPMENT



OUTCOMES

Transform and simplify Sydney's train network to deliver turn up and go services, faster journeys and greater capacity

- Turn up and go services for more customers
- Faster journeys for longer distance customers
- Simplified network providing more reliable services

After Sydney Metro City & Southwest opens in 2024



will be on the heavy rail network

MTMS Stage 2 Program Overview



Transport
for NSW

MTMS Stage 2 Program

North Package

South Package



(John Holland & Jacobs)

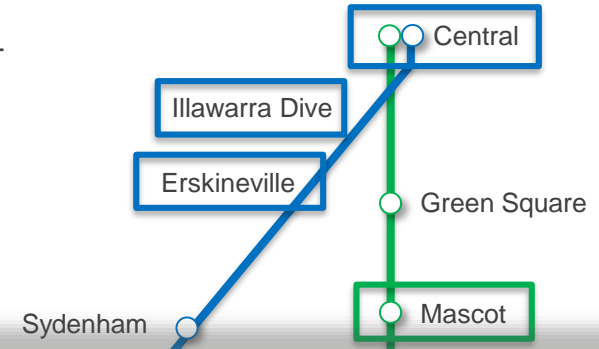


(Laing O'Rourke & KBR)

Next Rail

More Trains More Services Stage 2 Northern IDE

Sydney Terminal works	<ul style="list-style-type: none">Track layout changes and associated OHW & signalling worksNew Microlok system & signalling/OHW relocation works and 2 x platform extensions
Illawarra Dive Drainage	<ul style="list-style-type: none">Install & commission 4 sumps and pumps in 2 divesInstall Drainage, associated CSR and ULX
Erskineville Crossovers	<ul style="list-style-type: none">4 x crossovers and associated OHW and signalling at ErskinevilleNew Microlok, track drainage, CSR and ULX
Hurstville Crossover	<ul style="list-style-type: none">1 x crossovers and associated OHW and signalling at HurstvilleNew Microlok, track drainage, CSR and ULX
Rationalisation	<ul style="list-style-type: none">At Hurstville and Erskineville, remove 2 crossovers/siding/frame
Mascot	<ul style="list-style-type: none">New Traction substation, service tunnel to station. AC and DC Feeder
Wolli Creek	<ul style="list-style-type: none">New Traction substation. AC and DC FeedersCSR routes. Decommission section hut and Undercliffe station
Airport Tunnel	<ul style="list-style-type: none">33kV / 11kV AC Feeders Chalmers st > Mascot > Wolli CreekAuxiliary OHW 6.2km Green Square > Wolli CreekNew Signalling. Racks to 2 stations, 8 new signals, track circuit ret
Power Upgrades	<ul style="list-style-type: none">Auxiliary feeder Chalmers Street 'A' Substation to St James SectionVarious OHW base, structure & wire investigations



- ✓ Collaboration
- ✓ Integrity
- ✓ Delivery
- ✓ Continuous Improvement

Transport for Tomorrow

More Trains More Services Stage 2 Southern IDE



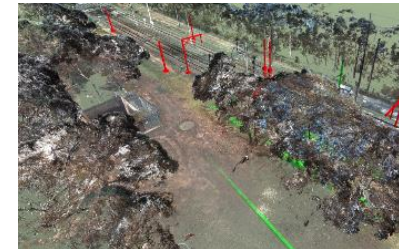
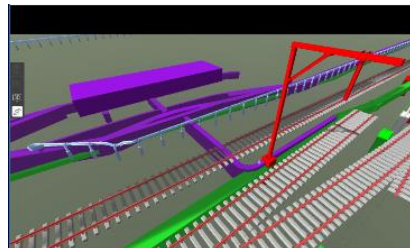
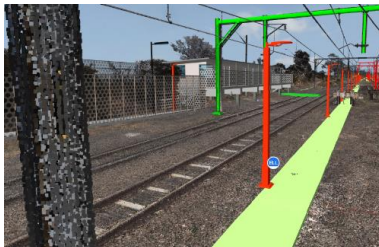
- 1 Mortdale Maintenance Centre**
Bogie Exchange System and associated works.
- 2 Waterfall Infrastructure Upgrade**
Stabling for 10 additional Suburban trains, platform extensions and a freight loop.
- 3 Stabling Upgrades for Long NIF**
Port Kembla and Wollongong.
- Station Improvements**
Platform extensions and associated works for longer NIF trains.
- Power Supply**
Feeder upgrades.
- Asset Rationalisation, Asset Resilience, Transport Integration & Sustainability**
Program-wide initiatives to prepare the network for the increase in services and trains already announced.



Transport
for NSW



- What's important for us?
 - Innovation and Excellence
 - Think differently, be better
 - Respecting & enhancing communities
 - Reward smart thinking
 - Local and Aboriginal businesses
 - Supplier partnerships
 - Investing for the future

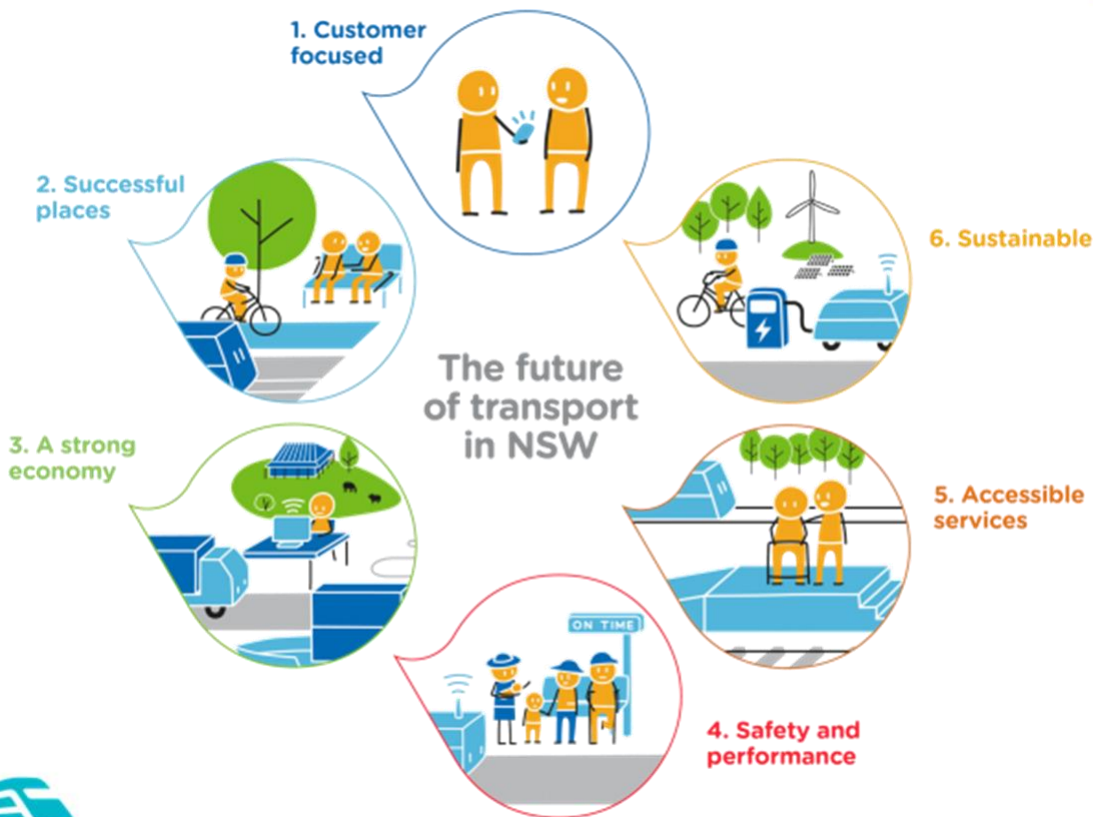


MTMS Stage 2 Objectives

Item	Objectives
Cost	<ul style="list-style-type: none">▪ To demonstrate and ensure VfM/best in class to deliver the MTMS Program Objectives with acceptable risk.
Safety	<ul style="list-style-type: none">▪ Safely deliver the MTMS Program.▪ Manage risks in a brownfield environment to meet the MTMS Program schedule.
Social Outcomes	<ul style="list-style-type: none">▪ Continually drive social and environmental outcomes through delivery of the MTMS Program.▪ Develop long term sustainable industry partnerships, through long term certainty of work, delivering innovative solutions.▪ Meet or exceed our 'end customer' outcomes through:<ul style="list-style-type: none">▪ minimising customer disruption; and▪ optimising Track Possession usage and access.▪ Minimise impact to the community (business, residents, customers), e.g. Disruptions, efficient possessions.▪ To attract, retain and develop skilled and critical resources to deliver the MTMS Program.
Innovation	<ul style="list-style-type: none">▪ Drive innovative approaches to attracting, retaining and developing resources to achieve efficient use of both public and industry resources (critical and general).
Program	<ul style="list-style-type: none">▪ Safely deliver the MTMS Program on schedule to achieve the customer outcomes as outlined in the business case.
Sustainability	<ul style="list-style-type: none">▪ To establish, within the MTMS Program, long-term tangible sustainable outcomes (environmental, social and training).

Sustainability Expectations

Future Transport 2056



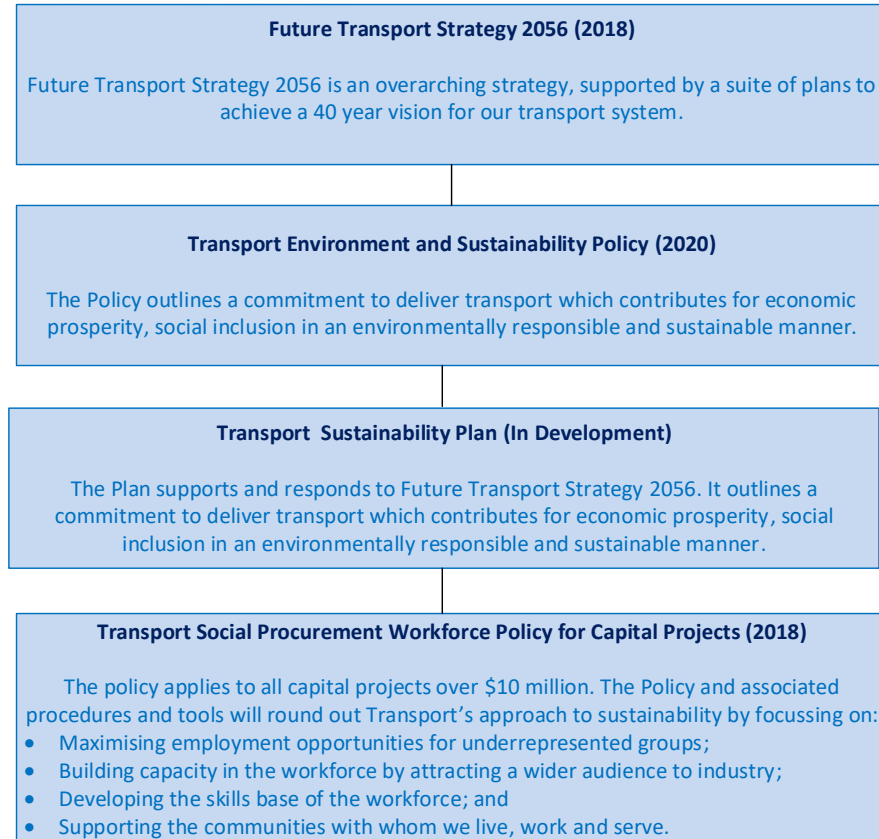
Sustainability Expectations

UN Sustainability Goals



Sustainability Expectations

TfNSW Sustainability Approach



Sustainability Objectives & Targets

Contract Target

65/110
ISCA IS Rating

Social Procurement

25%
Aboriginal and/or
Torres Strait Islander
people

25%
Youth employment

25%
Females in non-
traditional roles

Water

Reduce
operational water
consumption

Reduce
construction
water
consumption

Subcontractors
are empowered
to use non-
potable water
wherever
possible

Energy

Reduce
operational
energy
consumption

Reduce
construction
energy
consumption

Procurement

Reward Suppliers
and Subcontractors
for innovation to
assisting the Project
in achieving these
targets.

Materials

Reduction in
lifecycle
environmental
impacts of material

>9%
Of materials
purchased have an
EPD (Environmental
label)

Steel supplied to
the Project or
purchased by
Subcontractors
must be covered
by an EPD.

Reduction in
lifecycle
environmental
impacts of
material

Waste

95%
of all spoil is diverted
from landfill

90%
of inert and non-
hazardous waste is
diverted from landfill

60%
of office waste is
diverted from landfill

95%
Conservation of
topsoil resources

Stakeholder Engagement

Implement
a collaborative
approach to
minimise impacts to
key Stakeholders
and the Projects
surrounding
communities.

Innovation

Speak Up! If you are doing something amazing, we want to know about it!



- ✓ Cost efficiency
- ✓ Product performance
- ✓ Program efficiency
- ✓ Environmental outcomes
- ✓ Stakeholder impacts
- ✓ Social outcomes (community, workforce, diversity)
- ✓ Customer satisfaction
- ✓ Reputation
- ✓ Safety.



Social Procurement & Workforce Development

Social procurement is a unique **opportunity** to use Government purchasing power to **positively impact society**

Five objectives

1. Meeting NSW Government mandatory requirements
2. Building workforce capacity and legacy
3. Strengthening workforce diversity and participation
4. Local engagement
5. Community inclusion



Infrastructure Skills Legacy Program

Will boost the number of skilled construction workers and create fresh pathways to employment across the state



Social Procurement & Workforce Development

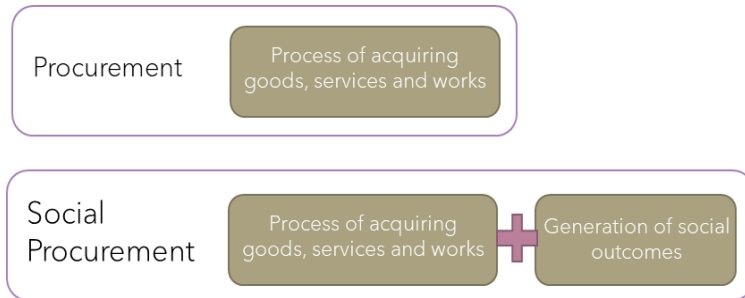
The importance of our social responsibility

**‘Our opportunity to create generations of Social outcomes,
when procuring goods & services for the program’**

- Create opportunities for local businesses and build their capacity
- Maximise opportunities for underrepresented groups
- Supporting & spending in the communities in which we will work
- Support our vision for a diverse & inclusive program

Social Procurement & Workforce Development

Spending the same dollar twice



Social procurement for the More Trains More Services program is focused on the following opportunities :

- ✓ Engage Aboriginal people in direct employment, engage Aboriginal businesses through procurement of goods and services and further develop Cultural Awareness in the workforce;
- ✓ Create employment for youth and long term unemployed;
- ✓ Diversify the workforce (women in non-traditional roles);
- ✓ Provide employment and contribute to increasing the employability of people with disabilities;
- ✓ Engage Social Enterprise;
- ✓ Directly impact local employment and engage local businesses within the supply chain

Social Procurement & Workforce Development

Both North & South will seek the commitment and participation of our supply chain to meet the following:

2.5% Aboriginal and Torres Strait Islander Workforce

50% of Aboriginal employees to be retained greater than 12 months

1.5% Aboriginal Participation Spend

2% of the total labour workforce to be made up of women in Non-traditional roles

20% of total labour workforce to be made up of learning workers

20% of all trades to be made up of Apprentices

5% of the overall workforce from disadvantaged, disabled and under-represented groups

2% of the workforce to be female

8% of the total labour workforce to be under 25

6 work placements per annum (pro rata) for people over 16 years of age and currently in school

6 graduate placements per annum (pro rata) for university undergraduates or recent graduates

1% Social and Disability Enterprise Spend



Supply Nation

Indigenous Business Verification

- FREE to Register businesses that are at least 50% Indigenous owned
- FREE to Certify Indigenous businesses (51% or more Indigenous owned, managed and controlled)

Membership

- Helps your organisation engage with Indigenous businesses
- Available for Corporate, Government and Not for Profits

Ben Price
Relationship Manager, NSW
Supply Nation | www.supplynation.org.au
ben.price@supplynation.org.au | 0415 743 520

Procurement Packages - South

Geography of works

- Mortdale
- Waterfall
- Thirroul
- Bellambi
- Wollongong
- Coniston
- Port Kembla
- Kiama

Package	Scope
Various 'Building' Subcontractors	Steelwork, metalwork, roller doors, precast walls etc
In Ground Materials	Precast pipe, Precast pits, HDPE pipe, Conduits etc.
Labour Hire	Supply of labour
Protection Officers	Supply of protection officers
Rail Steel	Supply of rail steel
Galvanised Steel Troughing	Supply of GST
OHW Masts and Portal Materials	Supply of galvanised steel masts and portals
Quarry Materials	Supply of various quarry materials, aggregates, ballast etc
Power Equipment	Transformers, Switchgear etc.
Piling	Various locations
Cabling	Supply of various types of cable
Civils and Earthworks Subcontractors	Various locations
Drainage Subcontractors	Various locations
Fencing Subcontractors	Various locations
Concrete Supply	Various locations
Reinforcement Supply	Various locations
Electrical / Lighting Subcontractors	To platforms and yards - various locations
Metalwork Subcontractors	Various locations
Modular Buildings	Various locations

Procurement Packages - North

Geography of works

- Erskineville
- Sydney Yard (Central)
- Mascot
- Wolli Creek
- Hurstville

Package	Scope
Earthworks Plant & Hi Rail Plant	Plant Hire Rates
Quarry Products	Supply of all Quarry Products
Labour Hire-Excluding Signal	Labour Hire Rates
Spoil & Slurry Disposal	Cart and Dispose of Spoil including Tip fees
Survey	Survey Crew rates
Bored Piling Substations	Install Bored Piling Rates
Civil Stormwater Drainage Install	Trench, Lay Pipes and backfill & Install Pits
Form Reo Pour - Substations	Install Formwork , Tie Reo & Place Concrete
Concrete Supply Only	Supply & Deliver Concrete
Reinforcing Steel Supply	Supply & Deliver
Precast Drainage Items Supply	Supply & Deliver
CSR: GST_GLT Supply	Supply & Deliver Troughs ,Pits
CSR/GST Install works	Install above Ground CSR -GST works
Switches & Crossings	Supply & Deliver Switches
Structural Steel Work	Supply & Deliver OHW Masts, Portals & For Building etc
Protection Officers Rates	Crew rates
HV Switchgear	Supply & Deliver HV Switch gear
Transformer Rectifiers	Supply & Deliver Transformers
DC Switchboards	Supply & Deliver Switchboards
HV Switchgear	Supply & Deliver
Transformer Rectifiers	Supply & Deliver
DC Equipment	Supply & Deliver
DC Switchboards	Supply & Deliver

Tender Process

Commercial team release a **request for tender (RFT)** to potential subcontractors to provide services to the project



RFT documentation, including Env. & Sust. Subcontractor Pack and draft contract conditions will be provided to the subcontractor to **review**



A **Tender Interview** will be conducted between the Project team as applicable (Including Sustainability) and the potential subcontractors. The tender interview will include Sustainability questions



The tender proposal provided by the subcontractor and the tender interview outcomes will be analysed as part of a multi-criteria analysis (MCA). This **Tender Analysis**, incorporates >20% non-financial aspects.



The works will be **awarded** to the most suitable subcontractor as per the outcome of the tender analysis



How to register EOI

Context – Our tender evaluation approach

Collect Data
Understand Your
Business



Sort The Data
Find Your Business
Match to Our Opportunities

How to register EOI

Where to Submit your EOI:

<https://www.supplychainschool.org.au/learn/mtms-south/>

<https://www.supplychainschool.org.au/learn/mtms-north/>

Why do we ask questions about your business and why its important:

- So we can understand the size of your business and match you to opportunities,
- So we can understand where you are located in relation to the project,
- So we can understand how well you are placed to help us achieve our social procurement targets.



Supply Chain Sustainability School

Hayley Jarick, CEO



SECTION ONE

About the School

How does the School operate?

Not for profit

Funded by Partner organisations

FREE learning resources

FREE Membership

Provide learning materials

Offer a common language

Lead upskilling

Increase industry competency

Collaborate with industry

Diverse delivery

Support existing industry and NFPs

Collaborate with knowledge institutions

Enable knowledge sharing by innovators



Resource types and topics



E-learning



Tools



Sustainable
Procurement



Sustainable
Construction



Modern
slavery



Human rights



Events



Videos



Environmental
management



Materials



Biodiversity



Waste



Documents



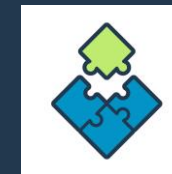
Links



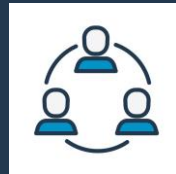
Water



Energy and
carbon



Climate change
adaptation & resilience



Local community
and economy

Funded &
supported by
leading
organisations



SECTION TWO

About FREE Membership

FREE
FREE
FREE
FREE



\$0

membership
fees with an
unlimited
users
subscription

Promote your
products,
services and
build your
network at



FREE
workshops &
industry
events

Upskill your
workforce
with our
online

Resource
Catalogue of

450+

FREE
resources

Stay up to
speed with an
unlimited user
subscription
to our



FREE
newsletter

Track and
promote
your status



Don't take our word for it,
this is what our members tell us...

Sustainability

is increasingly being
used in tender
applications and to win
work

70%

of members reported
that sustainability
knowledge has become
more important in the
last year

72%

of members have seen
economic, social or
environmental benefits
from improved supply
chains

75%

of members see the

SUPPLY CHAIN SUSTAINABILITY
SCHOL

as the go-to online
resource for supply
chain sustainability
knowledge

How to create a new Member account

Go to <https://www.supplychainschool.org.au/>

SUPPLY CHAIN SUSTAINABILITY SCHOOL

Home About us ▾ Learn ▾ Membership ▾ Partners ▾

EVENTS

LOG IN SIGN UP

Create account

Membership to the School and the use of all resources, e-learning modules and attendance at workshops is completely free of charge, all we ask is that you register with us so we can recommend the most appropriate learning. We will not share your details to any 3rd parties without your permission.

We will use your email domain name to match you to colleagues in your company who are already registered. If you are not matched to an existing account it means your company has not yet registered with the School.

Email address

Enter your company email address

The password must have at least 8 characters, at least 1 digit, at least 1 lower case letter, at least 1 upper case letter, at least 1 non-alphanumeric character such as !, ", or #

Password (again)

Firstname

Surname

City/Town

Region

Mobile number

Preferences

Please select between 1 and 3 trade categories your organisation operates in

Choose a trade

Choose a trade

Choose a trade

Data Protection & Your Privacy

☐ I understand and agree to receiving communications from the School as part of my membership. You can log in and change this any time in your profile settings.

☐ I am happy to receive text messages from School (event reminders, etc.)

☐ I have read and agreed to the terms and conditions of the School

Privacy Policy | Terms & Conditions

If you no longer agree to the Terms & Conditions then please contact info@supplychainschool.org.au

NEXT CANCEL

There are required fields in this form marked *

Contractors

Please select the organisations that you would class as your current customers (over the last 12 months). To see more, adjust your markets and topics, as some contractors are only related to specific fields.

There is no maximum, select as many as you supply to. This enables Partners (who fund the School) to understand how many in their supply chain are using the School.

Company

No selection

Search

NEXT STEP

Company registration

Enter your company name in the field below. If your company already exists, select it from the options presented

Company

No selection

Search first

Can't find your company?

NEXT CANCEL

Personal Dashboard

https://learn.supplychainschool.org.au/pluginfile.php/11937/mod_page/intro/New%20Partner%20induction%20video%202%20Personal%20Dashboard.mp4

See your name, avatar and a link to toggle to your company dashboard

Access your personal assessments and view your latest baseline scores

View your assessment history

Find your action plans and resources you've been allocated from your Company's action plan

Track your activity including events you've attended, resources you've viewed and courses you've enrolled in

Click on Resources Accessed to view a full breakdown of all the resources you've started and completed

Download your certificates and badges

Hayley Jarick



0

Badges

7

Certificates

View my profile

Take me to my company dashboard

Personal assessments

Complete your confidential individual assessment, track your score, and generate your bespoke action plan.

Once you have completed your action plan you will be able to reassess, see how you have improved, and generate your next action plan.

Assessment history

ASSESSMENT

Sustainability

SCORE

BASELINE

ASSESS >

Personal action plan

View your action plan of resources based on your most recent assessment results.

0
Personal

0
Allocated

ACTION PLAN >

My events

2

3

Registered

Attended

VIEW EVENTS >

My activity

25 hrs 5 mins

2 hrs 37 mins

Total time

CPD time

Action plans created

0

Resources accessed

116

Last accessed 2020-09-7

My courses

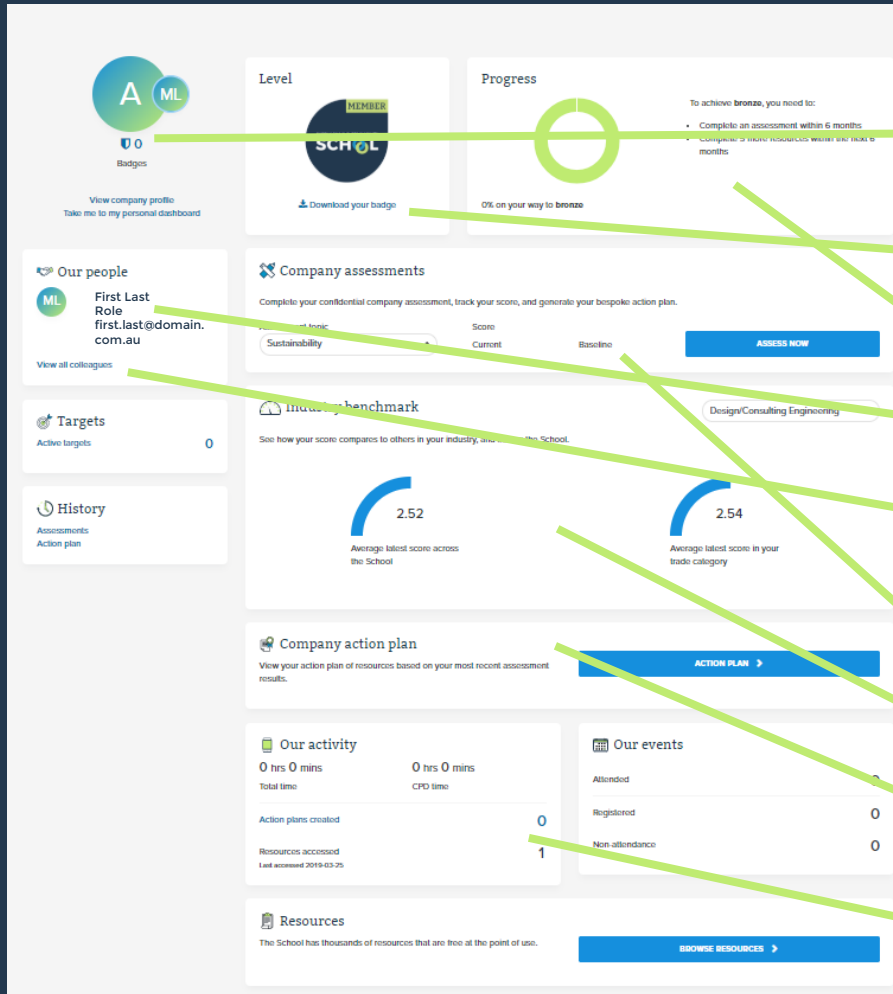
VIEW COURSE CATALOGUE >

Resources

The School has hundreds of resources that are free at the point of use.

BROWSE RESOURCES >

Member Dashboard



Use the icon or links to switch between your Personal and Company Dashboards

Download your Membership level badge

And how to get to the next level

See who your account owner is

And see who else in your company has signed up, see what they've completed and invite colleagues to join you

Track your Company Assessments

And benchmark yourself against others

View your action plan and allocate resources to colleagues to complete

And keep track of how you're going



Owner

This user is the main point of contact for the account, and can complete Company Assessments and view Company action plans. They can invite, approve and reject new users to their account.



Admin

These users have the same rights as Owners. An account can have as many admins as they like. Admins can assign roles to other users.



Member

These users can only complete personal assessments and action plans. They can view their colleagues, but cannot approve or reject new users.

SECTION THREE

MTMS Stage 2

Assess your knowledge

[Ask a question](#)

Resources

[Learning Pathways](#)

[Videos](#)

[E-learning](#)

[Events](#)

[What's new](#)

[IS v1.2 Innovation Challenge 6](#)

[Modern Slavery](#)

Partner project pages

[The GPT Group](#)

[Landcom NSW Suppliers](#)

[Mimco Projects](#)

[More Trains, More Services Stage 2](#)

[Parramatta Connect](#)

[RMIT](#)

[Stockland Projects](#)

[VIC Councils](#)

Downer Group projects

[Parramatta Connect](#)

[Downer Major Projects in Regional Victoria](#)

Laing O'Rourke projects

[Armada Road to North Lake Road Bridge Project](#)

[More Trains, More Services \(Stage 2 South\)](#)

[Redfern Station Upgrade – New Southern Concourse](#)

More Trains, More Services

Stage 2

About More Trains, More Services

More Trains, More Services brochure

DOWNLOAD

Over the next ten years the More Trains, More Services program will roll out world class technology to transform the rail network and provide customers with more reliable, high capacity turn up and go services.

More than \$4.3 billion is being invested in the More Trains, More Services program, which has already delivered more than 1700 additional weekly services across the rail network since 2017.

The next stages of More Trains, More Services will focus on delivering improvements to the T4 Illawarra, T8 Airport and South and the South Coast lines. Every day more than 450,000 customers travel on these lines, almost a third of all Sydney Trains customers.

Need for the MTMS Program

Transport for NSW (TfNSW) has a 10 year rail development plan and prioritised investment program for rail services, fleet and infrastructure that is known as the Medium Term Rail Development Program (MTROP). The future network planned for in the MTROP is expected to increase public transport capacity and meet customer requirements. The MTROP complements long term whole of NSW Government infrastructure plans and the work of the Greater Sydney Commission. The MTROP has identified the need for improvements to the T4 Illawarra corridor.

More Trains More Services (MTMS) is the mechanism to transform the entire heavy rail network over the next 10 years. The initial three stages will deliver the Medium Term Rail Development Plan (MTROP) a comprehensive 10 year plan to ensure the saturation and intensify heavy rail network meets projected customer demands and requirements through enabling the transformation of priority lines to automated, high capacity, turn up and go rail services.

The T4 Illawarra Line currently runs at capacity and is forecast to be significantly above capacity by 2026. TfNSW has determined that the line cannot provide the medium term capacity increases forecast for 2024 and beyond. Factors such as the significant urban development along the T4 Illawarra corridor between Woll Creek and Hurstville are driving the increased passenger demand, as well as growing congestion on major roads serving the Sutherland Shire and Illawarra region. A future Sydney Metro City and Southwest will not provide any relief for customers on the T4 Illawarra Line.

In addition to the forecast increase in passenger demand, planned changes to the heavy rail network in the period 2018 to 2024 will reduce the utility of key track assets in the current configuration, such as the Illawarra Local track between Woll Creek and Concord.

North Package

Follow this link to see the north package scope, policies, objectives, targets, resources and ECI details.

NORTH PACKAGE

South Package

Follow this link to see the south package's scope, policies, objectives, targets, resources and ECI details.

SOUTH PACKAGE

Transport for NSW

Follow this link to see Transport for NSW project information

TfNSW PROJECT INFO

More Trains, More Services Stage 2 North Package

T4 Capacity Improvement and T8 Airport Line Capacity Improvement

About Next Rail



John Holland has joined with Jacobs to partner with Transport for NSW to deliver state of the art improvements to NSW train customers. The partnership, known as Next Rail, has been awarded the More Trains, More Services-stage 2 north package of works that includes T4 capacity improvement and T8 Airport Line capacity improvement.

The contract will help provide a major improvement in services by removing bottlenecks and delivering essential infrastructure upgrades between Concord and Hurstville on the T4 Illawarra, T8 Airport and South Coast lines including:

- Reconfiguration of the track at Sydney Terminal and extension to
- Upgrades to Enkelsville and Hurstville Crossovers
- Signalling, overhead wiring, traction power and substation
- Other network power upgrades

The project worth close to \$260 million will create approximately 1000 jobs and improve customer journeys across NSW.

Construction will begin in the middle of 2020 and be completed by late 2022.

Sustainability Policy

Next Rail Sustainability Policy

DOWNLOAD

Next Rail is committed to delivering the MTMS Program in a safe, secure and sustainable way. Balancing economic, environmental and social factors is a key objective and contributes to a sustainable transport system. We are currently achieving this commitment by implementing a Sustainability Policy as part of the MTMS Program by:

- Considering whole of life costing
- Working together
- Fostering innovation
- Meeting a customer and community focus
- Engaging our partners
- Considering the future

Read the Next Rail Sustainability Policy for details.

More Trains, More Services Stage 2 South Package

T4 Eastern Suburbs and Illawarra Line and the South Coast Line upgrade

About Transport for Tomorrow



Loring O'Rourke has partnered with KBR and Transport for NSW to deliver the More Trains, More Services Stage 2 South Works Package. The partnership, known as Transport for Tomorrow, will upgrade the T4 Eastern Suburbs and Illawarra Line and the South Coast Line.

The \$250 million South Works Package is expected to provide a number of jobs in areas along the South Coast. This is hoped to give people an opportunity to work close to home. Transport for Tomorrow has also committed to an Infrastructure Skills Legacy Program to provide local workers and suppliers with the opportunity to gain experience on large projects.

Sustainability Policy

Transport for Tomorrow Sustainability Policy

DOWNLOAD

Sustainability is about maximising our environmental, economic and socio-economic performance in the interests of the business, our stakeholders and our planet. Loring O'Rourke is uniquely placed through our private ownership, operating model and value proposition to take a long term approach to sustainability. This policy sits alongside our Health and Safety, Quality, Environmental, Security and Business Resilience policies as part of our global policy framework, underpinned by our Global Code of Conduct. As an engineering organisation we are implementing a strategy which aims to create sustainable growth by meeting the economic, social and environmental challenges of our rapidly changing world.

Read the Transport for Tomorrow Sustainability Policy for details.

Learn

Transport for Tomorrow has partnered with the Supply Chain Sustainability School to provide free sustainability learning resources for staff, key contractors, suppliers and partners, so that not just every project – but every part of the supply chain – can be more sustainable.

There are three key steps that Transport for Tomorrow would like you to take. After all, everyone plays a part in creating successful, sustainable projects:



Step 1

Sign up or log in

Membership is fast, free and simple.

[LOG IN >](#)



Step 2

Complete a Self Assessment

This will help you understand your own (and your organisation's) level of sustainability knowledge. It will also give you your free sustainability learning action plan.

[ASSESSMENT >](#)



Step 3

Start learning

Start learning by completing the learning resources below



SUSTAINABLE CONSTRUCTION Sustainable Construction e-learning module

E-LEARNING MODULE

Includes waste, water, transport, carbon and energy and ethical sustainable construction issues.

[Beginner](#) ⌚ 60 minutes

[LEARN MORE >](#)



SUSTAINABLE PROCUREMENT What Sustainable Procurement actually means Sustainable Procurement An introduction to Sustainable Procurement e-learning module

E-LEARNING MODULE

This short online module explains what 'Sustainable Procurement' means, how it's relevant to you...

[Beginner](#) ⌚ 60 minutes

[LEARN MORE >](#)



BIODIVERSITY, CARBON AND ENERGY, ENVIRONMENTAL MANAGEMENT, LOCAL COMMUNITY AND ECONOMY, MATERIALS, SUSTAINABLE CONSTRUCTION, SUSTAINABLE PROCUREMENT, WASTE National Circular Economy Hub | Planet Ark LINK

Planet Ark is taking the lead on creating the National Circular Economy Hub and Marketplace...

[Intermediate](#) ⌚ 20 minutes

[LEARN MORE >](#)



SUSTAINABLE CONSTRUCTION

Sustainable Construction e-learning module

E-LEARNING MODULE

This module will discuss the various themes of sustainable construction, including waste, water, transport, carbon and energy and ethical issues.

[BEGINNER](#)

⌚ 60 mins

[LEARN MORE >](#)

1. Defining sustainable development and construction
2. Why is it important to business
3. How to implement in your business

Thank you

Hayley Jarick
CEO

ceo@supplychainschool.org.au
www.supplychainschool.org.au

Questions

Transport for NSW	James Griffin – Project Director, Ingrid Segovia & Tim Clarke
Next Rail (North Package)	Paul Dudding – General Manager, Matt Dimarco, Madison Page, Alex Bonello, Mariana Allen & Tom Cho.
Transport for Tomorrow (TFT) (South Package)	David Robotham – General Manager, Lindsey Spiller, Basilia McGaw & Richard Bentley
Supply Nation	Ben Price
Supply Chain Sustainability School	Hayley Jarick - CEO

Thank you for attending the

More Trains – More Services

Stage 2 Supplier Engagement Forum

<https://www.supplychainschool.org.au/learn/mtms/>